



2014 Annual Report

THE MISSION of Jamestown New Horizons is to promote the health and quality of life for children with disabilities through therapeutic horseback riding.

BOARD MEMBERS

David Jones – President
National Geospatial-Intelligence Agency

Donna Gonzalez – Vice President
Bissinger's Handcrafted Chocolatiers

Terry Anzalone – Secretary
Retired

Patricia Grabovac
ECCHC Group

Robert Jasper
Marketing Horizons

Christine Taylor
Vatterott College

Dorothy Walker
Midwest Library Services

STAFF

Lynn Werner – Executive Director/Treasurer

Bonnie Grueninger – Program Director

Nancy Finke – Executive Administrative Assistant

ACCOUNTING FIRM

Nichols, Stopp & VanHoy, LLC

WEB & E-MAIL ADDRESSES:

website: www.jnh-goneriding.org
e-mail: jnhgoneriding@charter.net

FUNDING:

PLB Partially funded by the
Productive Living Board

Jamestown New Horizons, a special combination of disabled riders, dedicated volunteers, experienced instructors and gentle horses, was founded in 1985 for the sole purpose of providing therapeutic/recreational horseback riding lessons for children with intellectual, physical and emotional disabilities. From the first of March to the end of November the riders gather three days a week on 20 acres of rolling hills in North County for riding lessons designed to help them “sit up tall.”

The number of children with disabilities continues to rise each year. This results in greater financial costs for the affected families and the educational and health care sectors. Many of the children who participate at Jamestown New Horizons have limited or no access to the individualized therapies they need due to their family's low income and being uninsured or underinsured.

Research has shown that natural therapies such as therapeutic horseback riding improve the child's physical and psychosocial well being, thereby decreasing the chance for accidents and related illness. Jamestown New Horizons provides a natural therapy for these children in a healthy, non-threatening rural environment – a setting that many of these children would not otherwise have the opportunity to experience. Jamestown New Horizons has maintained a 100 percent safety record while providing 1048 hours of therapy to children with disabilities who reside throughout the St. Louis metropolitan area.

Jamestown New Horizons uses a comprehensive evaluation process to chart the progress of each rider, enabling it to prove that its methods generate the desired outcomes. Evaluation measures include: balance, coordination, postural control, muscle strength, flexibility, then further evaluation noting social and learned behaviors such as interaction with riders/instructors, instruction/repetition, vocabulary, comprehension, discipline, and responsibility.

The freedom and independence children experience at Jamestown New Horizons act as a bridge to success in other areas of their lives as well. Having experienced the feeling of freedom and power that comes from riding a horse, the child's perception of his/her limitations and capabilities will never be the same.

Adult volunteers – horsemen, nurses, school teachers, and university students – were trained in specialized teaching methods and safety techniques. Eight of the JNH volunteers have served in the program for thirty years. Most of the JNH volunteers have served for five to twenty-nine years. Their years of experience and dedication give great depth to the quality of the JNH program. Currently, 55 adult volunteers allow JNH to provide many dollars' worth of impact for each dollar invested.

The JNH horses and ponies serve as the core to the Jamestown New Horizons therapeutic riding program.

We do not consider them as therapeutic tools; they are the therapy! Their complex movement is what makes this physical therapy unique. But beyond the physical benefits of therapeutic riding, some of the most valuable things that the JNH riders gain from their horses and ponies – courage, compassion, sharing, patience, persistence – are immeasurable, yet very important in developing self-esteem and good character.

All of the members of the Jamestown New Horizons Board of Directors actively participate in the JNH fundraising events. In addition, several of them work directly with the riders during lessons nine months of the year.

Jamestown New Horizons has received funding from the Missouri Foundation for Health since 2003. In addition to receiving partial funding from the Productive Living Board of St. Louis County since 1986, Jamestown New Horizons has fulfilled the Productive Living Board's Quality Enhancement/Service Excellence Standards for health and safety protocols, staff competencies, skill assessment, consumer satisfaction, and financial viability. The JNH Swing Fore the Kids golf tournament held at Crescent Farms Golf Club was a big success! 🍷

2014 BOARD MEETINGS

Jamestown New Horizons, 15350 Old Jamestown Rd., Florissant, MO 63034

January 28 - 7:10 p.m. - 8:20 p.m.

April 8 - 7:25 p.m. - 8:45 p.m.

July 8 - 7:25 p.m. - 9:30 p.m.

October 14 - 7:35 p.m. - 9:30 p.m.



“The Sidewalks End”

When students arrive at the valley of Jamestown New Horizons, a whole world of nature opens to them – the rolling hills, the ponds, the Canada geese, the deer, the foxes and even coyote, in addition to the horses and ponies. It’s quite a different world from special schools, clinical therapy, sheltered workshops, asphalt playgrounds and concrete sidewalks. At Jamestown New Horizons, “the sidewalks end.” As the father of one of the JNH riders says, “When we come here, it’s like we’ve entered a different world.” Another parent said, “There’s an attitude of serenity at Jamestown New Horizons, a feeling of acceptance hard to find elsewhere. It’s a place where no one looks at anyone funny and everyone is encouraged to be the best they can be.”

With classical music playing in the background, Jamestown New Horizons provides children with disabilities the opportunity to develop potential and strengthen a wide range of physical, mental, emotional and social abilities. The JNH riders quickly come to appreciate the physical and mental liberation they experience through their partnership with the loving, non-judgemental horses and ponies. This is a special relationship that would be difficult to duplicate in other settings.

It’s all about the Walk

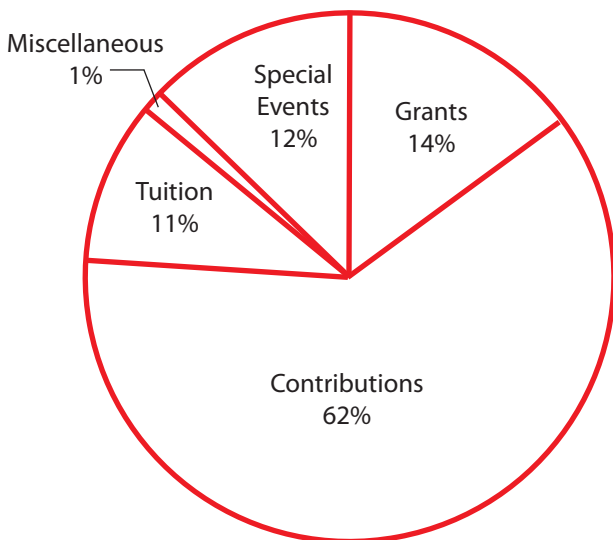
The Greek soldier and historian Xenophon wrote in 400 BC that “the outside of a horse is good for the inside of man.” This is especially true when one rides the horse at a walk.

The horse’s walk produces muscle movements in the rider’s hips and body that are similar to the muscle movements used when walking on their own feet. This is especially important for one who cannot walk or cannot walk very well. Every step the horse takes challenges the rider’s balance and posture with infinite variation. Like snowflakes, each movement is unique because the horse’s strides vary with the surface of the ground and the length of its stride. This infinite variation of movement simply cannot be duplicated by machines or other therapeutic equipment.

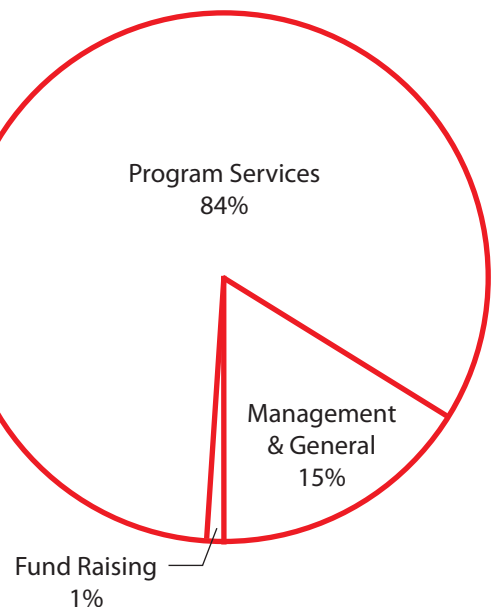
The horse’s movement at a walk is repetitive, predictable, and symmetrical – giving the rider’s muscles many opportunities within one riding session to experience these movement sequences over and over. A rider typically experiences more than a thousand rotational movements during one riding lesson, yet is not left exhausted. Even though riding the horse at the walk provides a tremendous workout for the rider’s muscles, the best part of all is that it doesn’t seem like a therapy session. The child is just riding, playing games, talking with friends and having great fun! 😊

Financials

SUPPORT & REVENUES – \$216,548



EXPENSES – \$167,890



STATEMENTS OF FINANCIAL POSITION – December 31, 2014 and 2013

ASSETS

	2014	2013
Current Assets		
Cash and cash equivalents	\$ 20,156	\$ 17,644
Accounts receivable	263	3,285
Unconditional promise to give	–	1,875
Inventories	1,526	1,613
Prepaid expenses	1,899	3,174
	<hr/>	<hr/>
Total current assets	23,844	27,591
Property and Equipment, Net	144,115	91,182
Other Assets		
Intangible asset, net	402	429
	<hr/>	<hr/>
Total assets	<u>\$ 168,361</u>	<u>\$ 119,202</u>

LIABILITIES AND NET ASSETS

Current Liabilities		
Accounts payable and accrued expenses	\$ 9,284	\$ 8,784
Net Assets		
Unrestricted	159,077	97,918
Temporarily restricted	–	12,500
	<hr/>	<hr/>
Total net assets	159,077	110,418
Total liabilities and net assets	<u>\$ 168,361</u>	<u>\$ 119,202</u>

STATEMENTS OF ACTIVITIES – Years Ended December 31, 2014 and 2013

	2014			2013		
	Unrestricted	Temporarily Restricted	Total	Unrestricted	Temporarily Restricted	Total
Support						
Grants	\$ 29,031	\$ –	\$ 29,031	\$ 27,948	\$ 37,500	\$ 65,448
Contributions	134,710	–	134,710	32,945	–	32,945
Total Support	163,741	–	163,741	60,893	37,500	98,393
Revenues						
Tuition and fees	24,098	–	24,098	17,930	–	17,930
Special events, net of direct expenses of \$5,944	26,168	–	26,168	20,302	–	20,302
Miscellaneous	2,541	–	2,541	3,521	–	3,521
Total revenues	52,807	–	52,807	41,753	–	41,753
Net Assets Released From Restrictions	12,500	(12,500)	–	25,000	(25,000)	–
Total support and revenues	229,048	(12,500)	216,548	127,646	12,500	140,146
Expenses						
Program Services	141,161	–	141,161	127,726	–	127,726
Management and general	25,178	–	25,178	23,257	–	23,257
Fundraising	1,551	–	1,551	1,309	–	1,309
Total expenses	167,890	–	167,890	152,292	–	152,292
Changes Net Assets	\$ 61,159	\$ (12,500)	\$ 48,659	\$ (24,646)	\$ 12,500	\$ (12,146)
Net Assets - Beginning of Year	97,918	12,500	110,418	122,564	–	122,564
Net Assets - End of Year	\$ 159,077	\$ –	\$ 159,077	\$ 97,918	\$ 12,500	\$ 110,418

STATEMENT OF FUNCTIONAL EXPENSES – Year Ended December 31, 2014

	Program Services	Supporting Services		Total
	Therapeutic Horseback Riding	Management and General	Fund Raising	
Personnel Expense				
Salaries	\$ 34,835	\$ 18,649	\$ 185	\$ 53,669
Payroll taxes	2,415	1,426	14	3,855
Total personnel expense	37,250	20,075	199	57,524
Lesson Expense	67,117	–	–	67,117
Depreciation and amortization	17,961	246	–	18,207
Outside services	12,000	–	–	12,000
Professional services	540	3,750	–	4,290
Insurance	2,665	–	–	2,665
Loss on death of pony	321	–	–	321
Supplies	139	576	576	1,291
Promotional	–	–	500	500
Telephone	123	–	122	245
Training	1,546	–	–	1,546
Postage	15	22	57	94
Utilities	1,374	–	–	1,374
Repairs and maintenance	26	–	–	26
Miscellaneous	–	509	87	596
Dues and licenses	84	–	10	94
	<u>\$ 141,161</u>	<u>\$ 25,178</u>	<u>\$ 1,551</u>	<u>\$ 167,890</u>

STATEMENT OF FUNCTIONAL EXPENSES – Year Ended December 31, 2013

	Program Services	Supporting Services		Total
	Therapeutic Horseback Riding	Management and General	Fund Raising	
Personnel Expense				
Salaries	\$ 26,126	\$ 17,098	\$ 275	\$ 43,499
Payroll taxes	1,999	1,279	21	3,299
Total personnel expense	28,125	18,377	296	46,798
Lesson Expense	66,926	–	–	66,926
Depreciation and amortization	12,789	248	–	13,037
Outside services	12,000	–	–	12,000
Professional services	540	3,650	–	4,190
Loss on death of pony	–	–	–	–
Insurance	3,222	–	–	3,222
Supplies	423	534	534	1,491
Promotional	–	–	–	–
Telephone	239	–	239	478
Training	2,010	–	–	2,010
Postage	103	108	126	337
Utilities	1,301	–	–	1,301
Repairs and maintenance	26	–	–	26
Miscellaneous	–	340	84	424
Dues and licenses	22	–	30	52
	<u>\$ 127,726</u>	<u>\$ 23,257</u>	<u>\$ 1,309</u>	<u>\$ 152,292</u>

STATEMENTS OF CASH FLOWS – Years Ended December 31, 2014 and 2013

	<u>2014</u>	<u>2013</u>
Cash Flows from Operating Activities		
Change in net assets	\$ 48,659	\$ (12,146)
Adjustments to reconcile change in net assets to net cash provided by operating activities:		
Loss on death of pony	321	–
Depreciation	18,207	13,037
Non-cash donations included in support	(71,434)	–
Changes in:		
Accounts receivable	3,022	(1,883)
Inventories	87	(19)
Prepaid expenses	1,275	762
Unconditional promises to give	1,875	(1,875)
Accounts payable	500	5,551
Net cash provided by operating activities	<u>2,512</u>	<u>3,427</u>
 Cash Flows From Investing Activities		
Proceeds from sale of equipment	–	–
Purchase of equipment	–	(810)
Net cash used in investing activities	<u>–</u>	<u>(810)</u>
 Increase in Cash and Cash Equivalents	2,512	2,617
 Cash and Cash Equivalents - Beginning of Year	<u>17,644</u>	<u>15,027</u>
 Cash and Cash Equivalents - End of Year	<u>\$ 20,156</u>	<u>\$ 17,644</u>
 Non Cash Investing Activities		
Contribution of equipment and pony	<u>\$ 71,434</u>	<u>\$ –</u>